

iX14

PERFORMANCE PERFECTED

SMART TECHNOLOGY



P-SPMR14000EU iX14 14 Channel DSMX Transmitter Only

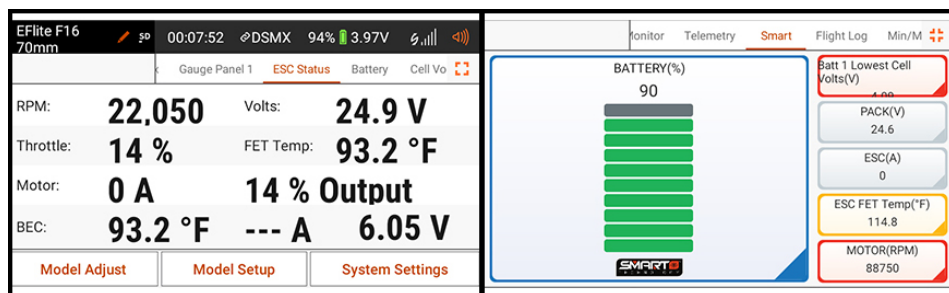
Spektrum developed the iX series of Smart-ready transmitters for pilots seeking powerful functionality along with next-level connectivity. The 12-channel iX12 came first and was followed by the 20-channel iX20, the most advanced Spektrum air transmitter to date with an unprecedented array of features, innovations, and upgrades.

The iX14 now joins the series as the perfect intelligent transmitter for intermediate to advanced level pilots who fly mid-to high-end performance RC aircraft, including EDF jets and giant-scale turbine jets. It offers 14 channels and includes many of the latest Spektrum advances in connectivity, programmability, and ergonomics.



FEATURES

- 14 channels at 22ms frame rate allows the iX14 to be used with high-performance jet aircraft
- Fast Android-powered touchscreen interface
- Full-colour, easy to read screen
- Compatible with Smart Technology out of the box
- Includes the latest upgrades to the Smart dashboard
- Superb ergonomics for hours of comfortable setup and flying
- Includes smooth, contactless, precision gimbals
- Speech-to-text functionality through wired headsets
- USB-C port allows charging the 10,500mAh 1S Lithium-Ion transmitter battery with the included magnetic USB cable and magnetic USB-C adapter
- 250 model memory
- Programming for airplanes, helicopters, sailplanes, and multi-rotors



NEEDED TO COMPLETE

- Compatible Spektrum receiver

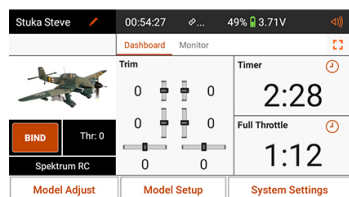
IN THE BOX

- Spektrum iX14 Transmitter
- Custom iX14 Neck Strap
- iX14 Decal Sheet
- Magnetic USB-C Adapter
- USB Magnetic Adapter Cable
- Quick Start Guide

With its fast Android interface, Smart Technology compatibility, precise Hall-effect gimbals and more, the iX14 continues the Spektrum brand's commitment to innovation and reinforces its position at the cutting edge of aircraft radio technology.



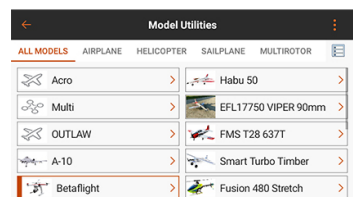
Featuring contactless hall effect sensors that offer advanced precision, low maintenance, and an ultra-smooth feel that's conveniently adjustable from the front of the transmitter.



The 4.5-inch, full-colour, easy-to-read iX14 touchscreen interface provides information in crisp, clear detail and allows you to make precise setting changes with just a "tap".



The weight distribution and ergonomics of the iX14 have been optimized to fit a wide range of pilot needs. The result is a sense of balance, comfort and functionality.



You can store 250 models straight to the iX14 transmitter! The enormous capacity of the iX14's on-board Model Memory means your whole fleet can be stored all on one radio.