

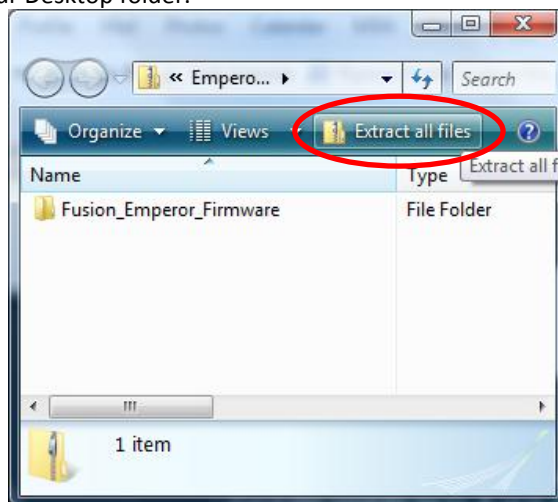
FUSION EMPEROR L702BP - FIRMWARE RELEASE 2 UPDATE PROCEDURE

REQUIREMENTS

To upgrade the firmware in the Emperor charger, you will require a PC running Windows 2000, XP, Vista or Windows 7 and a USB to mini USB wire.

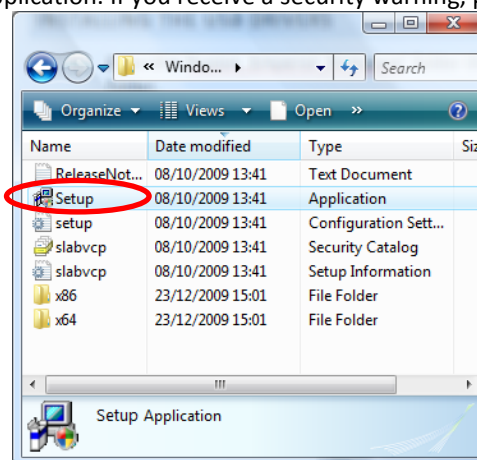
DOWNLOAD AND EXTRACT THE FILES

1. Download the new firmware files from Emperor page on the Logic RC website.
<http://www.logicrc.com/Default.aspx?ItemId=O-FS-L702BP>
2. Open the 'ZIP' file and extract the files to a folder on your hard disk. We normally recommend extracting the files to your Desktop folder.

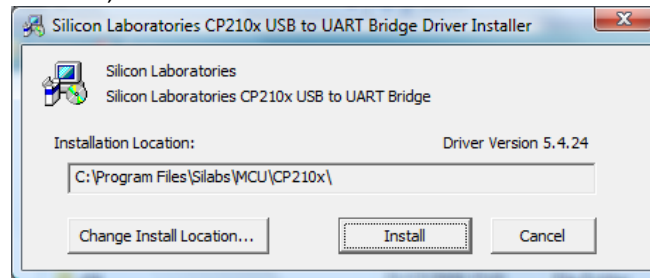


INSTALLING THE USB DRIVERS

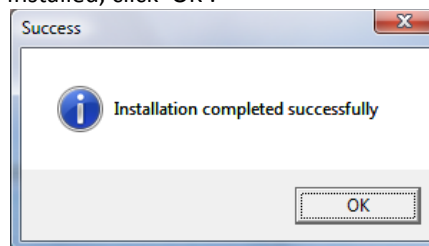
1. Open the 'Fusion_Emperor_Firmware' folder that you have just extracted, then open the 'Drivers' folder.
2. If you are using Windows 2000, XP or Vista open the 'Windows_2K_XP_Vista' folder, or for Windows 7 open the 'Windows_7' folder.
3. Double click on the Setup application. If you receive a security warning, please select 'Allow'.



- On the screen shown below, confirm the installation location and click 'Install'.

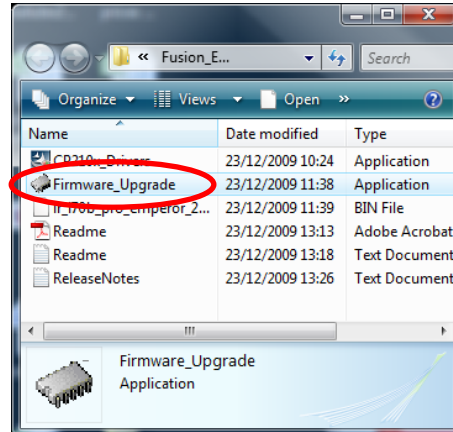


- When the drivers have been installed, click 'OK'.

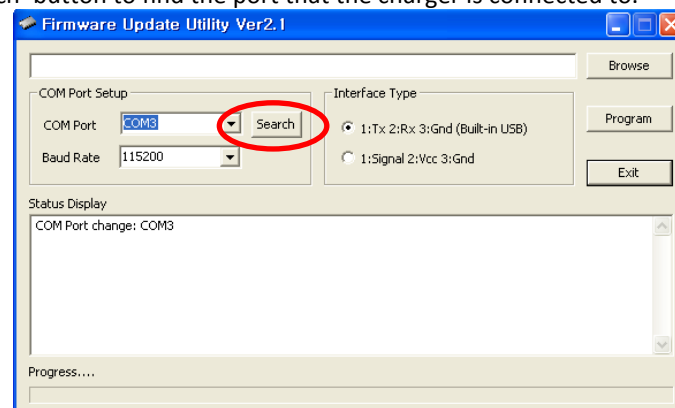


INSTALLING THE FIRMWARE

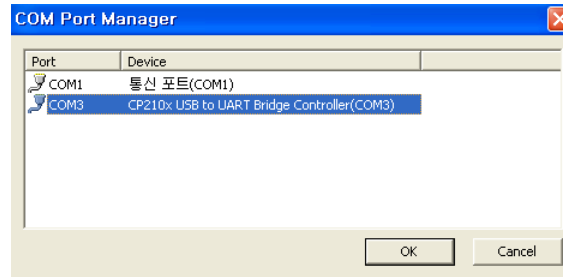
- With the charger turned off, connect the USB to mini-USB lead from the PC to the charger. If this is the first time that the USB has been connected, then the computer will automatically detect and install the correct drivers.
- Run the Firmware_Upgrade program (back in the main folder, not the drivers folder) and accept any security warnings.



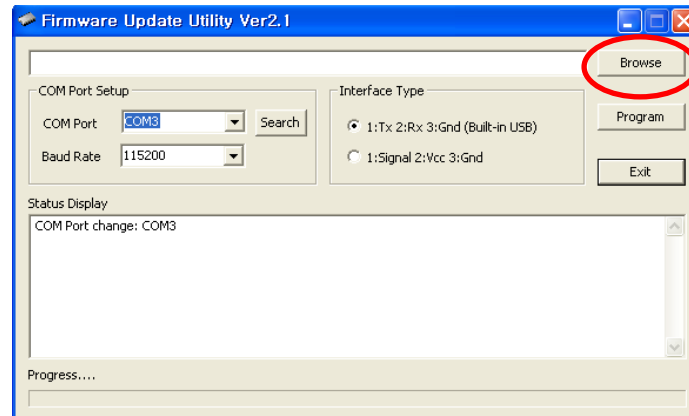
- Click the 'Search' button to find the port that the charger is connected to.



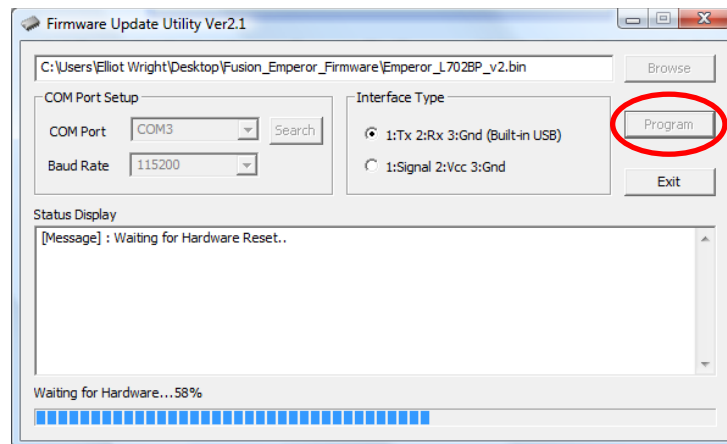
4. Select the COM port showing the 'Silicon Labs CP210x USB to UART Bridge' and click OK.



5. Select 'Browse', then select the new firmware file (Emperor_L702BP_v2.bin).



6. Press the 'Program' button then connect the power to the charger (within 10 seconds).



n.b. If you receive an error message saying 'Port not open', then please perform step 3 again.

7. The firmware will now be upgraded and when it is complete the charger will start up. Once completed, you can exit the upgrade software and disconnect the USB lead.